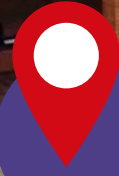




BERKHAMSTED



UNITED KINGDOM

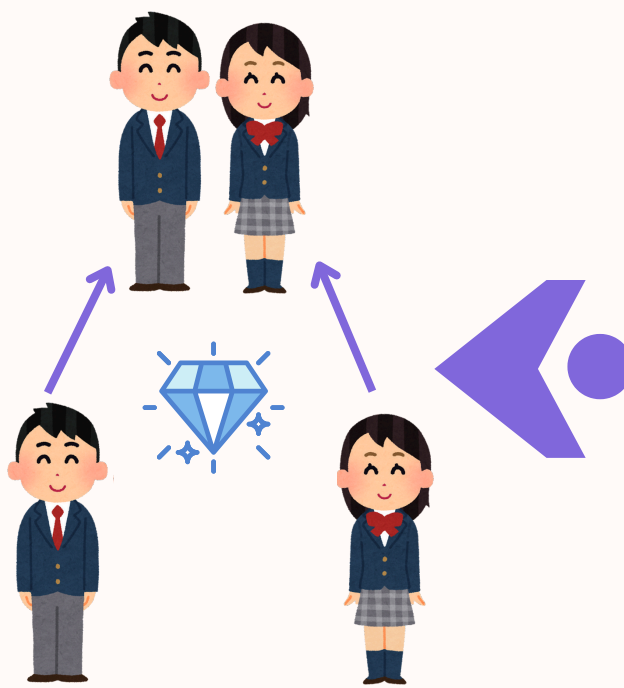


BERKHAMSTED

BOARDING SCHOOL

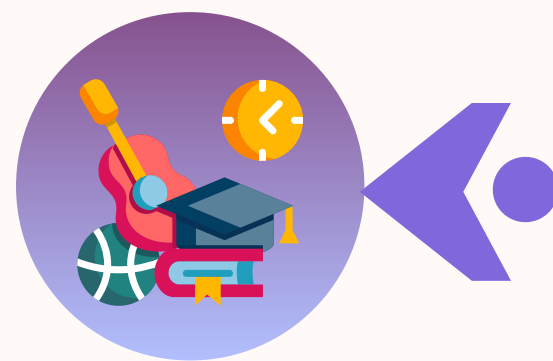
---- COED ----

Est. 1541



EDUCATIONAL FRAMEWORK

The Diamond Structure learning system is both coeducational and gender-segregated. Ages 11–16: Implement gender-segregated classes to enhance focus and productivity. - Ages 16–18 (Sixth Form): Reunite for academic pursuits to prepare for university and the professional realm.



EXTRACURRICULAR PURSUITS

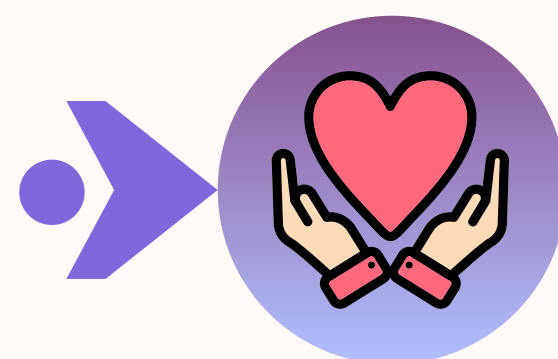
A diverse array of extracurricular activities, encompassing sports, music, art, drama, and adventure pursuits such as high ropes and outdoor learning, promotes outstanding sports leadership, creativity, and teamwork.

NEAREST INTERNATIONAL AIRPORT

<30mins to London Heathrow Airport

STUDENT SUPPORT

Close student care, a House System that promotes connection and nurtures social and emotional well-being, a small, welcoming, and secure community, along with comprehensive facilities including a swimming pool, sports fields, and a theater.



TECHNOLOGY IN EDUCATION

The application of technology in education has been nominated for the Tes Schools Awards 2025 in the Best Use of Technology category, recognizing its effective integration of ICT in teaching and learning.



CE|TALENT SCHOLARSHIP

UP TO 47%

Save: 1,044,000 THB

FULL PRICE: 2,218,500 THB

WITH SCHOLARSHIP: 1,174,500 THB



02-7125300



Line: @ceta (ū@)



CETA Worldwide Education

